

# iGUIDE® CAD Solutions

iGUIDE offers a variety of advanced architecture solutions designed to enhance spatial visualization and project planning. With its immersive virtual walkthroughs, detailed floor plans and accurate measurements, iGUIDE provides architects, designers and contractors with precise tools to speed up their CAD-based workflows.

## Advanced Drawing Package

This package pairs iGUIDE's Premium virtual walkthrough with a drafted floor plan (DWG), a detailed plotted drawing package and lidar point cloud data for all floors (DXF) to provide complete documentation of your property.

- iGUIDE Premium – 3D Virtual Walkthrough
- Plotted Drawing Package (PDF):
  - As-Built Floor Plans with MEP (surface level) details
  - Dimension drawing plotted on the sheet (DWG export)
  - Point cloud (plotted on sheet):
    - Horizontal
    - Vertical (if provided)
- Drafted Floor Plan (DWG)
- Lidar point cloud data on all floors (DXF)

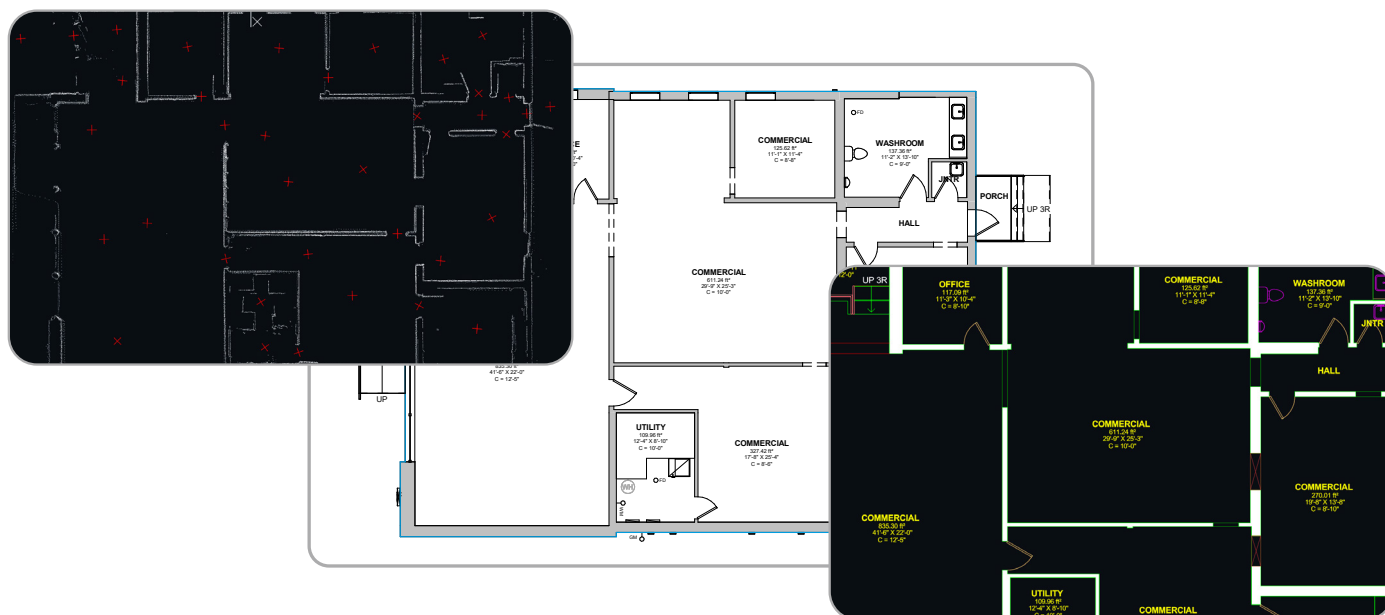
The Advanced Drawing Package has a range of Add-ons available that can be included for an additional cost. When ordered, these Add-ons will automatically be added to the Plotted PDF Drawing Package. They offer the flexibility to choose exactly what set of deliverables is needed for your project.

### Add-ons Available:

- Roof Plan
- Reflected Ceiling Plan
- Exterior Elevations
- 3D Model

### Download Full Sample with all Add-ons

The downloadable sample above has all Add-ons and associated deliverables included for reference. Add-ons are not included by default in the Advanced Drawing Package and must be added for an additional cost when ordering.



# iGUIDE® Add-ons

iGUIDE Add-ons must be ordered with an iGUIDE Virtual Walkthrough or Advanced Drawing Package, and are included in the plotted PDF when paired with the latter. When paired with an iGUIDE Premium or Standard they will be provided in CAD format only. They offer flexible, project-ready deliverables—perfect for fast-tracking drafts, designs and development.

## CAD Floor Plan Add-on\*

- Drafted floor plan (DWG)
  - LOD 200: Interior wall thicknesses are set to North American standards, and exterior spaces are included (patios, decks, porches, etc.)
  - AIA standard layers with annotations including labels, area totals, objects dimensions, etc. (*Advanced Drawing Package and iGUIDE Premium only*)
- Lidar point cloud data of all drafted floors (DXF)

[Download Sample](#)

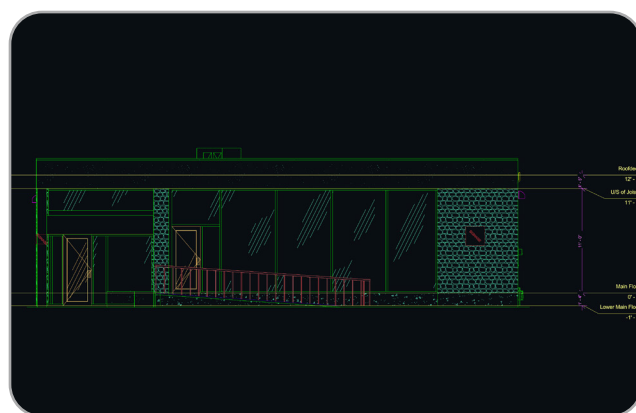
\*CAD Floor Plans are automatically included in the Advanced Drawing Package. They can also be ordered alongside a Standard iGUIDE with reduced detail.



## Exterior Elevation Add-on

- Drafted exterior elevation drawings (DWG)
- Includes front, rear and side views of building façade(s)

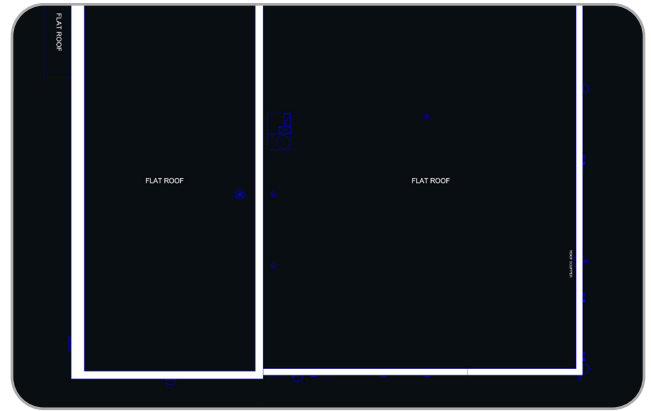
[Download Sample](#)



## Roof Plan Add-on

- Drafted roof plan (DWG)
- Includes slopes and roof edges of primary structure

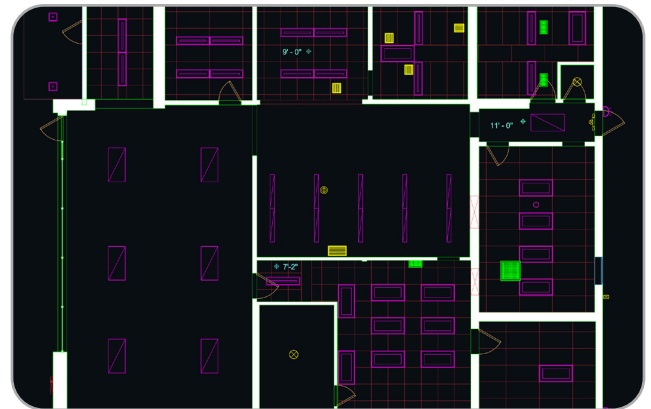
[Download Sample](#)



## Reflected Ceiling Plan Add-on

- Drafted reflected ceiling plan (DWG)
- Includes ceiling elements such as bulkheads, lighting locations and ceiling height indicators

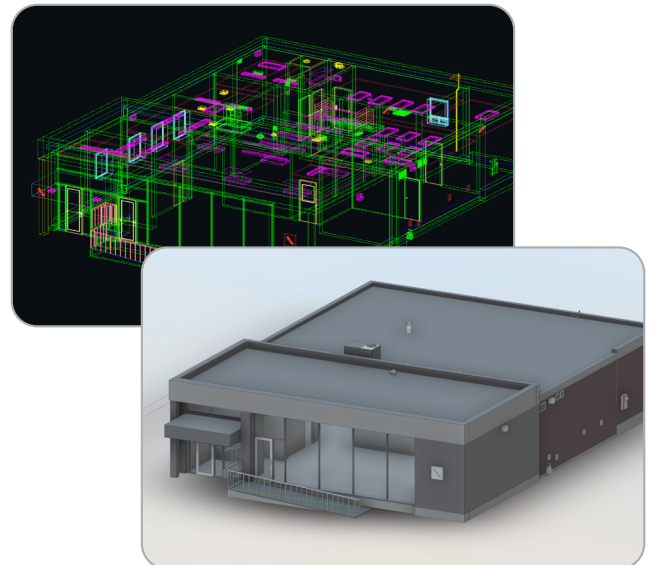
[Download Sample](#)



## 3D Model Add-on

- 3D model (RVT or DWG)
- Includes walls, doors, windows and basic structural elements

[Download Sample](#)



# Price List

Package	CAD
iGUIDE Standard	\$0.03 / ft <sup>2</sup> (1,500 ft <sup>2</sup> minimum)
iGUIDE Premium	\$0.042 / ft <sup>2</sup> (1,500 ft <sup>2</sup> minimum)
Advanced Drawing Package	\$0.14 / ft <sup>2</sup> (1,500 ft <sup>2</sup> minimum)
Add-on*	
CAD Floor Plan **	Package + \$0.028 / ft <sup>2</sup>
Reflected Ceiling Plan	Package + \$0.042 / ft <sup>2</sup>
Exterior Elevation	Package + \$0.042 / ft <sup>2</sup>
Roof Plan	Package + \$0.042 / ft <sup>2</sup>
3D Model	Package + \$0.098 / ft <sup>2</sup>

\*Add-ons require the selection of a package and pricing is always added to base package pricing except when otherwise noted.

\*\*CAD Floor Plans are always included with an Advanced Drawing Package.

Looking for a price estimate on your next project?

[Click here](#)